

# Newsletter

Early Fall 2020

SQUIBNOCKET POND RESERVATION

Issue No. 69





#### Board of Directors

Peter Getsinger, *President*  
Alan Rappaport, *Vice-President*  
Walter Looney, Jr., *Treasurer*  
Bill Howell, *Assistant Treasurer*  
Hillary Noyes-Keene, *Clerk*

Chris Alley  
Stever Aubrey  
Peter Brooks  
Susannah Bristol  
Susan Crampton  
Mary Lou DeLong  
Matthew Dix  
Keith Dodge  
Robert Egerton  
Thomas Enders  
Lisa Foster  
Tara Gayle  
Ellen Harley  
Lizzie Horvitz  
Geoffrey Lauprete  
Elizabeth Packer  
William Plapinger  
Nancy Randall  
Thomas Rapone  
Phil Regan  
Aileen Roberts  
Thomas Robinson  
John Schaefer  
Carla Taylor-Pla  
Sara Tucker  
Alec Walsh  
Amy Weinberg

#### Honorary Directors

Emily Bramhall  
April Hamel  
Rez Williams

#### Staff

Adam R. Moore  
*Executive Director*  
William Bridwell  
Nevenka K. Daniels  
Kristen Geagan  
Susan Hughes  
Elizabeth Loucks  
Peter Rodegast  
Joseph Rogers  
Nancy Tutko

#### Editor

Kate Feiffer

Founded in 1959 by Henry Beetle  
Hough and Elizabeth Bowie Hough

FROM THE EXECUTIVE DIRECTOR, *Adam R. Moore*

## The Familiarity of Fall



Squibnocket Pond

Photo: Frankie Drogin

We asked, "What will the fall be like?"

We wondered, will the Island remain busy? Will people stay on, even after the usual Labor Day exodus? How many people will retreat from their urban life, and enroll their children in the Martha's Vineyard schools?

We are finding out. School enrollments are up, and school is either online-only, or a hybrid of online and classroom instruction. Realtors and builders say they are busier than ever. It is a seller's market.

With people staying, will the conservation lands remain busy, with trailheads filling to capacity in October and November and perhaps even December, just as they did in March?

The pandemic has upended Island life. We grope our way forward, breaking traditions and overlooking familiar milestones. Yet to the question of what the fall will be like, there is one aspect of a Vineyard autumn that I can speak to with certainty.

What I do know is that in September, the goldenrod burst forth in sunburst bouquets of yellow blossoms. Purple asters dotted the edges of dusty dirt roads. Migrating tree swallows swarmed in great, swirling flocks over the bayberries beside Black Point Pond. Brookside beetlebungs turned a brilliant scarlet. And that this September, after working closely with the Kennedy-Schlossberg family, the Land Bank, and generous donors, we announced that over 300-acres

of undeveloped land in Aquinnah will be held in conservation and will soon be open for the public to enjoy. What I know for certain is that—for every September and every fall and every season ever to come—this land will be available for all to appreciate and enjoy.

And I know that in October, the staghorn sumac in the Nat's Farm hedgerow will turn a blazing red, and its branches will droop, laden with ripe bunches of lavender berries. The red maples along the Tiasquam will turn yellow, and orange, and red, and sometimes all three colors on the same leaf. The plains of huckleberry at Quansoo will turn orange, and the poison ivy a bright red.

And come November, even the doughty oak leaves will turn color, turning to a rusty shade of orange, and then scattering in a stiff breeze. By mid-month the oaks will be bare, save their cladding of lichen, and will appear in stark silhouette as the sun sets through the woods. The winter sunsets will have begun, the most beautiful of all.

In the early days of the pandemic, as we faced fear and confusion, the familiar signs of spring returning to the Island gave us comfort and reassurance. And in these days of fall, as we ponder the change to Island life, and wonder about how long the pandemic will be with us, nature stands ready to reassure, and comfort, and guide us, once again.





# Squibnocket Pond Reservation



Witch Pond at Squibnocket Pond Reservation





Sheriff's Meadow Foundation and the Martha's Vineyard Land Bank issued the following press release on September 3, 2020:

Sheriff's Meadow Foundation, the Martha's Vineyard Land Bank Commission, and Red Gate Farm LLC are pleased to announce an agreement to conserve one of the most important and ecologically diverse habitats in New England. The 304-acre Aquinnah property, among the largest and most spectacular undeveloped parcels on the island, will be known as the Squibnocket Pond Reservation.

Upon completion of a standard biological species inventory and final management plan, the majestic dunes, windswept beach, kettlehole pond, wooded trails and open meadows will be open to the public.

The below-market transaction is expected to be completed by December 15, 2020. The \$27 million purchase price will be paid over a four-year period.

"The Martha's Vineyard Land Bank Commission and Sheriff's Meadow Foundation are thrilled to collaborate on this project of island-wide significance and we gratefully acknowledge the historic and cultural significance of the land," said Land Bank Executive Director James Lengyel and Sheriff's Meadow Executive Director Adam Moore.

"We also thank the Land Bank Commissioners and Town Advisory Board members for their support of this effort, and the Sheriff's Meadow Foundation donors for their generous financial contributions, and the Kennedy - Schlossberg family for their close cooperation," said Mr. Lengyel and Mr. Moore.

"Our family has endeavored to be worthy stewards of this magnificent and fragile natural habitat, and its sites of cultural significance," said Caroline Kennedy. "We are excited to partner with two out-

standing island organizations, and for the entire island community and the general public to experience its beauty. We look forward to many more happy years in Aquinnah."

---

#### **Additional remarks by Adam Moore**

The conservation of 304 acres of Red Gate Farm and the creation of Squibnocket Pond Reservation is the most significant acquisition in the history of Sheriff's Meadow Foundation.

Conserving this land, and creating the ability for all the people of Martha's Vineyard to visit and enjoy this land, for all the generations ever to come, has been the pinnacle of my career in conservation. I thank Caroline Kennedy and Ed Schlossberg and their family, thank our partners at the Martha's Vineyard Land Bank Commission, and





thank all of our generous donors for making the creation of Squibnocket Pond Reservation possible.

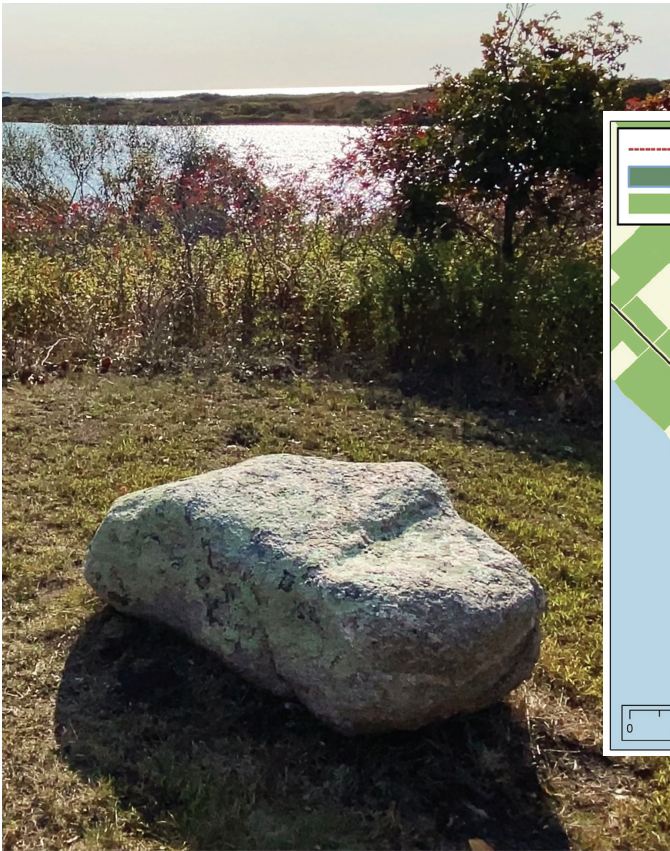
Of the \$27 million purchase price, \$15 million will be paid by the Martha's Vineyard Land Bank Commission, and \$12 million will be paid by Sheriff's Meadow Foundation. Sheriff's Meadow Foundation will pay \$6 million at closing, and the remaining \$6 million over the next four years.

At press time, Sheriff's Meadow Foundation had raised \$10 million toward the purchase price, and has available to it a \$1 million match from Hansjörg Wyss and the Wyss Foundation to match gifts from new donors. Sheriff's Meadow plans to raise a \$2 million endowment to fund its share of the stewardship and maintenance expenses.

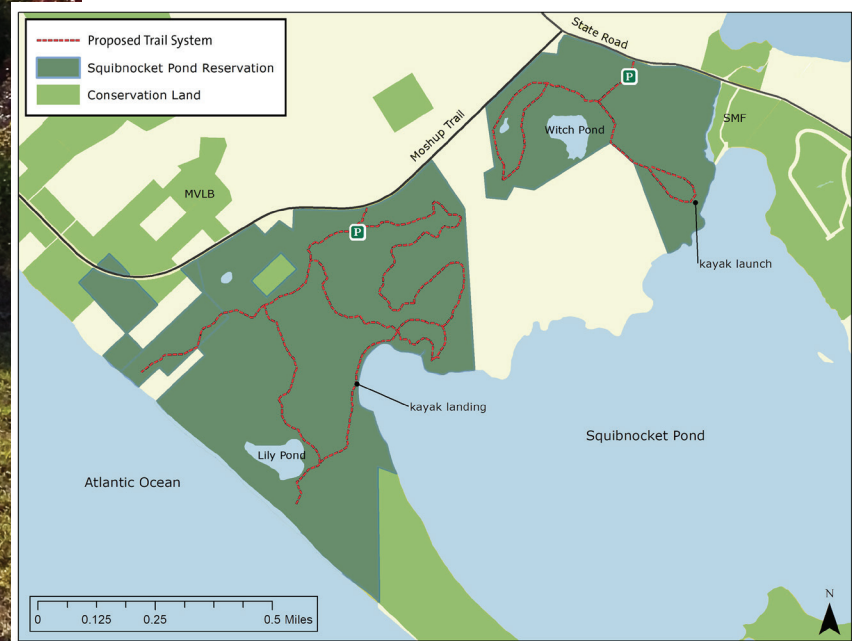
Sheriff's Meadow Foundation and the Martha's Vineyard Land Bank Commission will own undivided common interest in Squibnocket Pond Reservation at the 44:56 ratio, matching the proportion of the purchase price paid by each organization. The two organizations will jointly administer and manage the lands. An ecological inventory has begun, and this inventory will serve as a basis for a management plan and all necessary permits and approvals. It is anticipated that the planning process will be complete, and the land will be opened to the public, in late fall 2021.



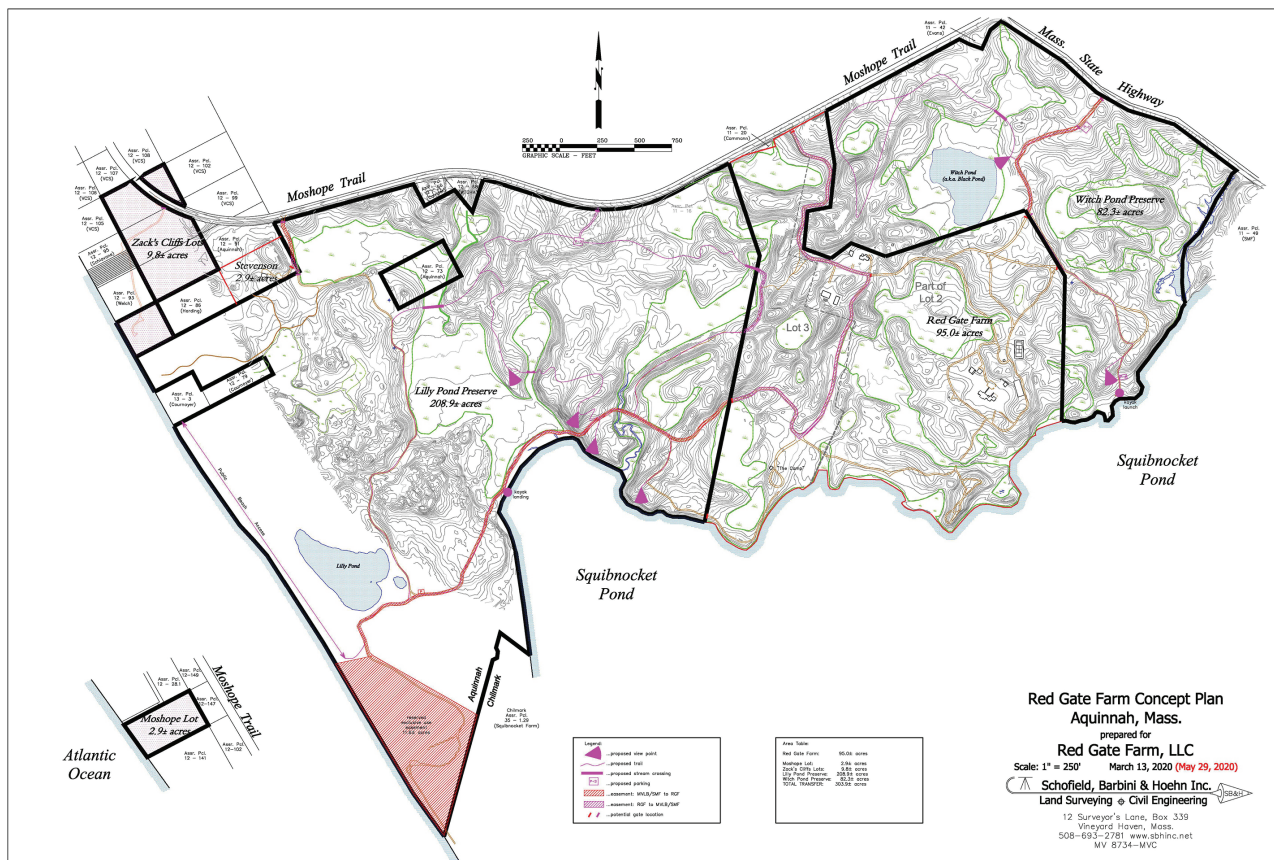




## Squibnocket Pond Reservation Proposed Trails and Kayak sites



## Squibnocket Pond Reservation Concept















Squibnocket Pond Reservation, *Photos contibuted by: Frankie Drogin, Kate Feiffer, Susan Hughes, and John Siffert*



# Foundation Elects New Directors



**TARA GAYLE**

Tara Gayle is a landscape designer with an emphasis in resilient ecological design. In addition to becoming a certified soil consultant, her education has taken her across the country and the world, studying permaculture design and regenerative agricultural systems. At the core of her philosophy is a mission to encourage people to look at their environments holistically, while incorporating elements of time-honored design and reinforcing our sacred relationship with the natural environment. She is a year round resident of Martha's Vineyard.



**LIZZIE HORVITZ**

Lizzie has been coming to Martha's Vineyard since before she could talk, and it continues to be her favorite place on the planet. When she's on island, she tries to

jump in the ocean every day, explore the walking trails and try every restaurant that serves breakfast. She is currently the founder and CEO of Green Lizard, a company that helps educate consumers on the environmental footprint of their purchases and incentivizes them to make better decisions. She has a BA from Middlebury College and an MBA and Master of Environmental Management from Yale. Lizzie is originally from Shaker Heights, Ohio and currently lives in New York City.



**AILEEN K. ROBERTS**

Aileen Kennedy Roberts serves as Vice Chair of the Barnes Foundation in Philadelphia where she chairs the building committee. She has served on the board of directors at the Children's Hospital of Philadelphia, the Franklin Institute, the Avenue of the Arts, the International House and the William Penn Charter School. She graduated from the Design School of North Carolina State University with a Bachelor of Arts degree in Landscape Architecture. Prior to starting a family she was a banker with PNB, now Wells Fargo, in the investment management and trust divisions. Aileen enjoys summers in West Tisbury working on design projects, vegetable gardening, golf, and walking the trails on the Island.



**CARLA TAYLOR-PLA**

Carla Taylor-Pla has been enjoying Martha's Vineyard, where her family has a home in Chilmark, for the last 45 years. Carla started her career as a broadcast journalist in Massachusetts and Connecticut. Following that, she worked to improve educational opportunities for children as a policy advocate for high quality early childhood education in Washington, DC. In addition, Carla served on the leadership team that launched the educational programming brand, PBS KIDS, for Public Broadcasting Service. More recently, she worked for The Washington Post where she managed advertising promotions. Carla is currently Founder and Owner of Carla and Liv KIDS, which supports children and parents in the transition to preschool and kindergarten. She is a speaker on the subject and author of a book series, *SCHOOL IS NEW TO ME: A Beginner's Guide to Starting School*, which includes bilingual (English-Spanish) versions. Carla holds a BA from Yale University, an M.S. in Journalism from Northwestern University (Medill School of Journalism), and an MBA from American University.

## **CHRIS ALLEY AND SUSANNAH BRISTOL**

We are delighted to welcome Chris Alley and Susannah Bristol back to the Board. As per SMF Board rules, Chris and Susannah both took time off after serving 10-year terms. Their bios can be found online.



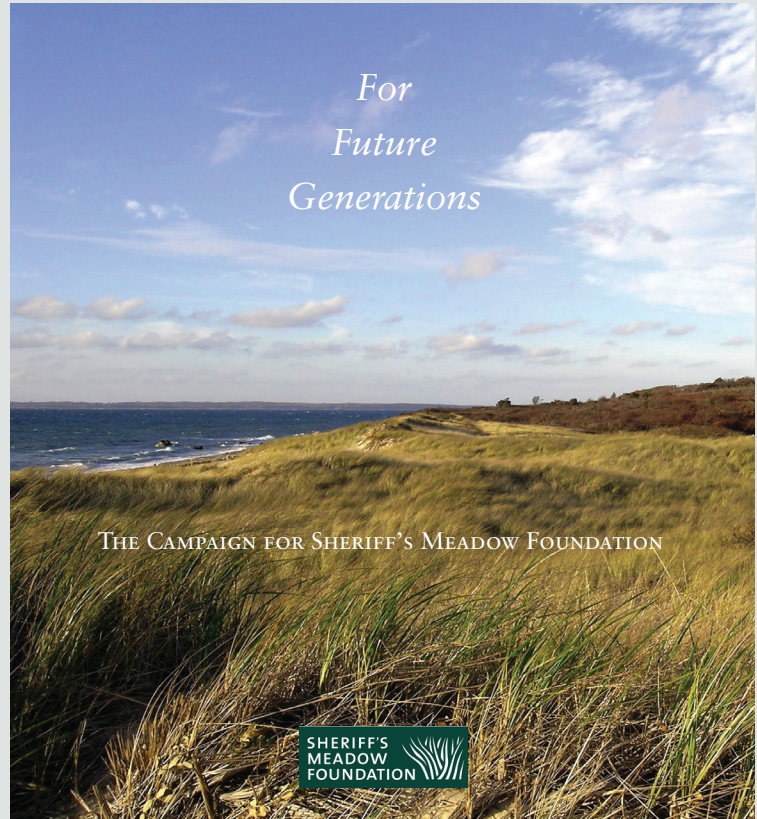


### ALEC WALSH

Alec and Sally Walsh moved full time to the Vineyard in 2019, coincidental with his retirement from Harding Loevner, an asset management firm in New Jersey where he was a portfolio manager and a partner. The restorative power of the outdoors and hiking have been a constant in their lives and those of their three children, with Jockey Hollow National Historical Park in New Jersey, the AMC huts in the White Mountains and the trail system here on the island all being an important part of their daily routine. His formative years were spent on Chappaquiddick before buying a house, in 2010, in Chilmark between Quitsa Pond and Squibnocket Beach. Alec is also a trustee of the Permanent Endowment Fund of Martha's Vineyard.



Footprints in the water of Sengekontacket Pond at the Caroline Tuthill Preserve.



## *For Future Generations*

### THE CAMPAIGN FOR SHERIFF'S MEADOW FOUNDATION

#### *Achieving our mission:*

Conservation – forever protecting the natural, beautiful, rural landscape and character of Martha's Vineyard.

Stewardship – securing the ability of Sheriff's Meadow Foundation to care for its lands and trails in perpetuity.

Community– connecting the trails, enhancing the lands, serving our island community.

#### *Our Financial Goals:*

- \$6,000,000 endowment and dedicated funds
- \$5,000,000 annual fund and operations
- \$2,000,000 trail fund – half for current trail use and half for long-term fund
- \$1,000,000 land acquisition fund
- \$1,000,000 land enhancements and education

**Total Goal:** \$15 million

**Current Status:** \$12.3 million raised in cash, bequest intentions, and pledges. **Needed to meet overall goal:** \$2.7 million

*Please join the campaign...the future needs your commitment today.*



# Diversity, Equity and Inclusion Committee

In response to nationwide concerns about social and racial justice and equity, Sheriff's Meadow Foundation has formed a Diversity, Equity and Inclusion Committee. Even on the island of Martha's Vineyard, these concerns touch many of us deeply. The goal of this committee is to examine and improve the relationship of people on the island to the land we care for.

As former board chair Brien O'Brien wrote in March, SMF recognizes "the unique restorative powers of these exquisite, natural environments; they have something of a supernatural healing element that allows us to regroup, regenerate, and grow." Amid the current pandemic and economic disruption, Sheriff's Meadow has found more and more people are turning to our trail network to experience the healing powers of nature.

There has been widespread interest in the Board's new DEI committee, which is co-chaired by Bill Plapinger and Lisa Foster, and includes eight other members of the board, including Executive Director Adam Moore. Our plan is to spend some time gathering data on how we interface with the community at every level, from the trails and staff to vendors and donors. We will also research what other land trusts have done to increase community engagement and develop recommendations from our peers' experiences and best practices. Perhaps most importantly, we will reach out to different Island communities to find out how we can make our lands more accessible and welcoming to all.

As an organization, our goal is to serve everyone on the Island. Anything we can do to make people feel more welcome on our lands and enhance access will be mutually beneficial to both SMF and the Island residents and visitors we serve.



Sheriff's Meadow Sanctuary, Photo by: Liz Loucks

## Annual Meeting

*Annual Meeting held on June 19, 2020*

The Board of Directors of Sheriff's Meadow Foundation held a virtual Annual Meeting on Friday, June 19, 2020. At the meeting, the Board elected Directors, Officers, and members of the Executive Committee and Nominating Committee, and thanked those Directors who completed their service on the Board.

The Board elected seven new Directors. Elected to a first, three-year term on the Board were Chris Alley, Susannah Bristol, Tara Gayle, Lizzie Horvitz, Aileen Roberts, Carla Taylor-Pla, and Alec Walsh. Biographies and photographs of each new Director are included in this newsletter. The Board re-elected Peter Brooks, Lisa Foster, and Bill Plapinger to second, three-year terms as Directors, re-elected Nancy Randall and Tom Robinson to third, three-year terms as Directors, and re-elected Walt Looney and Phil Regan to fourth, one-year terms as Directors.

The Board elected Peter Getsinger to a one-year term as President and Alan Rappaport to a one-year term as Vice-President. Walt Looney was re-elected to a one-year term as Treasurer and Bill Howell was elected to a one-year term as Assistant Treasurer, and Hillary Noyes-Keene was elected to a one-year term as Clerk.

At the conclusion of the meeting, the Board bade a fond farewell to departing Directors Kim Burns, Carol Hillenbrand, and Patty Favreau.

## Hunting Season

Hunting begins half an hour before sunrise and ends half an hour after sunset. There is no hunting allowed on Sundays.

Hunting season dates:

**Archery: October 5 – December 31**

**Shotgun: November 30 – December 12**

**Primitive Firearms: December 14 – 31**

We strongly recommend wearing blaze orange for visibility on all trails, those that officially allow hunting, and even those trails where hunting is restricted. Please keep your dogs leashed and, if possible, wearing something orange.

Sheriff's Meadow Foundation properties where hunting is not allowed:

Bittersweet Hill, Brightwood Park, Caroline Tuthill Preserve, Eastman and Knapp Preserves, Huckleberry Barrens, Nats' Farm, Roth Woodlands, Sheriff's Meadow Sanctuary, Slater Preserve, Hal & Olive Tilghman Preserve, Wallen, Preston, & Shands Preserve, and West Chop Woods.





# 2020 Virtual Summer Benefit

*On July 20th, Sheriff's Meadow Foundation hosted a virtual benefit since we could not gather in person this summer. The following are edited selections from remarks given by SMF Executive Director Adam Moore and SMF Board President Peter Getsinger.*



## Adam Moore

I'm Adam Moore, I'm the executive director of Sheriff's Meadow Foundation, and tonight it is my great pleasure to welcome you to our virtual summer benefit! I hope that everyone got out today, and enjoyed a walk on one of our beautiful sanctuaries. Thank you for taking the time out of this beautiful evening to Zoom in with us today for this virtual event.

I would like to begin our virtual event by thanking you, our sponsors. Our mission is to conserve the natural, beautiful, rural landscape and character of Martha's Vineyard for present and future generations, and your financial support makes accomplishing this mission possible. Your support for our Summer Benefit funds about a third of our operating budget. The Summer Benefit provides a critical source of funds, and I am so grateful to you, our sponsors, for supporting us, so generously. And, I am so grateful to our Summer Benefit Committee, who worked so hard to make this virtual event, as meaningful, and enjoyable, as possible.

In the year ahead, we will continue to work as hard as we can to conserve land across the Island, and to connect the trails together, and make sure our lands are cared for as well as they can possibly be.

We have formed a new Diversity, Equity, and Inclusion Committee, and we will take positive actions to make sure that our organization becomes more diverse in every respect, and that we make sure that our sanctuaries and programs and communications are as welcoming and inclusive as possible.

And we are writing a sustainability plan, to make sure that all that we do— from agriculture to trail creation to caring for buildings to the stewardship of our forests—are managed as sustainably as possible.

Tonight I give a very special thanks to past [SMF] President Rez Williams, who painted the beautiful oil painting of Cedar Tree Neck Sanctuary beside me, and to Kathy Forsythe, who used a portion of the painting to create a beautiful poster of Cedar Tree Neck Sanctuary.

I would like to take just a minute to let you know what Sheriff's Meadow Foundation has meant personally over the past few months. The pandemic actually proved to be one of the most inspiring times of my career, as I have never seen our lands enjoy a higher level of use. But the early days of the pandemic were dismal, and stormy, and frightening, and confusing. All the news was bad. Yet when all seemed lost, and it seemed like things would never get better, nature gave us hope.

Because then spring came.

- And the ospreys returned.
- And the shadbush bloomed.
- And the starflowers blossomed, just like they always do.
- And the birds sang.
- And the terns and plovers and skimmers flocked back to Little Beach.
- And all the leaves unfurled and opened.

And in nature, everything carried on, just as it is supposed to. In nature, we found hope, and constance, and solace. And you find that on a Sheriff's Meadow Foundation sanctuary. And you will always find that— now, tomorrow, next year, forever. So this spring, Sheriff's Meadow gave us hope.

So tonight I thank you, all of you, our Sponsors and supporters and volunteers, for joining us here tonight, and thank you for your loyal and enthusiastic support of Sheriff's Meadow Foundation.

Thank you and good night.



## Peter Getsinger

On behalf of the Getsinger family I am humbled to be with you all here today. My family's involvement with Sheriff's Meadow goes back some 46 years, but before I get into that, I wanted first to thank those individuals that are going off the board after many years, and Brien O'Brien who has done a terrific job of leading the organization over the last three years. First, to those that have served, Kim Burns, Patty Favreau, and Carol Hillenbrand who are going off the board after many years of Sheriff Meadow service, and welcome those that are coming on board, Chris Alley, and Susanah Bristol, who come back to the board after a year away, and Tara Gayle, Lizzy Horvitz, Aileen Roberts, Carla Taylor-Pla, and Alec Walsh.

I want to thank Brien O'Brien, who has completed his time as president. During his tenure, the financial health of the organization has improved dramatically since he became president and we initiated the campaign, and he guided the organization through these complex times, So thank you Brien.

As we all know, in mid-March the United States was confronted with the Corona Virus and what resulted in a global pandemic that has hit the United States harder than any other country in the world. In mid-March Sheriff's Meadow was faced with a very difficult decision: to close down or keep our trails open and offer a refuge, a place to appreciate the beauty of this island, a place to appreciate the good that we as



---

## 2020 Virtual Summer Benefit *continued*

an island and SMF have done for future generations to walk and commingle with nature.

As complicated as the last six months have been, the mission of Sheriff's Meadow has remained clear, we stayed open throughout the Covid crisis, and as a result, the number of visitors to our various trails spiked dramatically and validated why we are steadfast in our commitment to what we do, protecting the rural character of this island, these islands, a refuge, and a place to appreciate the delicate relationship that exists between man and nature.

With that commitment, our challenges continue to grow, over the next several years we need to complete the Capital Campaign begun three years ago. Our goal is to have an endowment draw that covers a third of our annual budget. We still have a lot of work to do on this score, and we look forward to working with you towards its completion.

In terms of land preservation, Sheriff's Meadow is an important member of the conservation partnership. We meet quarterly with the other conservation groups on the Island. We collaborate, and work together toward a common goal, to increase the footprint of conserved property, that is available for all to appreciate. Our collective longer term goal is to see somewhere close to 50% of the Island forever preserved. And with property valuations where they

are, I believe that working with other organizations such as the Martha's Vineyard Land Bank will greatly increase the opportunity to conserve land.

As to my involvement with Sheriff's Meadow, our family first connected with Sheriff's Meadow through Henry Beetle Hough in 1974. Sadly, my older brother had lost his life in a car accident. Robbed of his life, my parents wanted to honor the timeless nature of the beauty here, and turned to Henry to write the dedication to a memoir relating to a major Trustees of Reservation property on Chappaquiddick. In his dedication, he said: "Those now living, who visit and revisit regions with the excitement of discovery and renewal are sharers, enjoying in trust the ancient, modern, and eternal character of a special region of Martha's Vineyard. They are sharers still with young Gordon Getsinger, whose love is embodied in the untamed the untamed wildness of this place. Those words in many respects embody the character of Sheriff's Meadow."

Both in 1984, 2002, and ultimately in 2010, my family partnered with Sheriff's Meadow. We felt a need to conserve property for the enjoyment of generations to come. We are now into our fifth generation here, and are pleased to have made a small contribution to the Island's rural preservation.

---

## Volunteer Spotlight



Edward Gilmartin

In the early spring of 2019, I emailed Adam Moore and asked if I could help in some way. Little did I know then that I'd be the one benefiting. We had a great conversation and soon after I met Sheriff's Meadow Foundation Property Manager Liz Loucks at Sheriff's Meadow Sanctuary in Edgartown. Liz's knowledge and enthusiasm for the property was an eye opener. As we walked the trails, Liz pointed out numerous flowers, plants and shrubs, and invasive species. I learned a lot and knew I'd like to start volunteering with SMF.

Liz asked if I'd like to attend a Beach-Nesting Bird Training. There, I met biologists from BiodiversityWorks and The Trustees who gave a power point presentation on the protected shorebirds. After the classroom portion we were off on a field trip to SMF's Little Beach. Out on the beach and using spotting scopes from the Eel Pond boat launch and I had a chance to speak with the shorebird biologists that SMF contracts to protect the birds and to learn more. It's easy to see their passion to protect the shore birds.

I highly recommend putting Sheriff's Meadow Sanctuary and Little Beach on your to-do list. The trails are well-groomed for an easy stroll around Sheriff's Pond, where ice was harvested and used before refrigeration. You'll pass John Butler's mudhole with views of Eel pond and Edgartown outer harbor. Along the trail you'll see some of my favorite wildflowers like the blazing red Cardinal flower, Swamp Rose-mallow and the small delicate flowers of Wild Lettuce, Lactuca, to name just a few. Look close-

ly and you'll find native blueberries and blackberries to pick and eat. At the pond viewing benches at the SW corner of the pond, you'll be near the dead tree, or snag, that some locals call the "Harry Potter Tree." Look closely along the wet meadows and you might just see the brilliant blue Damselfly, (I call it a Dragonfly).

Out on Little Beach Preserve you may see the endangered Piping Plover, the Black Skimmer feeding on fish as it glides just above the water, talkative Terns flying overhead, and my favorite, the American Oystercatcher with its gleaming orange eyes and long orange beak.

I hope my experiences volunteering for SMF inspire others to discover these properties. Be sure to say hello if you see the crew from SMF during your adventures and thank you to Director Moore and the entire crew for welcoming me; its greatly appreciated!

*Edward Gilmartin is an Edgartown seasonal resident.*





# 2020 Virtual Summer Benefit Sponsors

*We are very grateful to the following individuals and businesses for their generous sponsorship.*

## **Cedar Tree Society**

Brien O'Brien and Mary Hasten  
John Schaefer and Pam Zilly

## **Beetlebung Tree Society**

Thomas Enders and Elise Thoron  
Getsinger Family  
Eric Green and Carmin Reiss  
Jill and Alan Rappaport Family  
Amy and John Weinberg

## **Cherry Tree Society**

Darrell Family

## **Beech Tree Society**

Jennifer and Jonathan Blum  
Susannah and Brian Bristol  
Dick and Barbara Couch  
Ellen and Ed Harley  
Philip and Unni Kaltenbacher  
John and Charlotte Klein  
Sevda and Blake Kleinman  
Walt and Diane Looney  
Bill Plapinger and Cassie Murray  
Brian and Aileen Roberts  
Joan Margot Smith

## **Sassafras Tree Society**

Peter and Nancy Brooks  
Kim and Dennis Burns  
Susan Crampton  
David and Betsy Epstein  
Patty and Marc Favreau  
Jeremy and Angie Flug  
David and Lisa Grain  
Terry and Wes Guylay  
Christian Halby and Susan Schaefer  
Carol and Roch Hillenbrand  
Hutker Architects, Inc.  
Carol Kenney

Jeff and Lois Meyer  
Nancy and Jeff Randall  
Alec and Sally Walsh  
Gail and John Wasson

## **Holly Tree Society**

Chris Alley and Kate Feiffer  
Stever and Elsie Aubrey  
Ken and Ann Baum  
John and Mollie Callagy  
Richard Canty and Hope Woodhouse  
Christopher and Barbara Cole  
Alan and Suzanne Dworsky  
Bob and Angela Egerton  
David and Audrey Egger  
Jesse and Betsy Fink  
Jack and JoAnn Fruchtman  
Lizzie Horvitz  
Bill and Nina Howell  
Michael Kutsch and Tammy Coselli  
Joseph and Deborah Loughrey  
Edward and Kathy Ludwig  
Zeev and Yael Pearl  
Anne Stone  
James and Susan Swartz  
Philip and Sigrid Tiedtke  
Sara and Matt Tucker  
Susan Whiting

## **Oak Tree Society**

Merle and Bonnie Berger  
Lorraine Bressler  
Ned and Louise Brooks  
Jonathan Chatinover and Elizabeth O'Connor  
Cheryl Curtin and Stanley Cruwys  
Henriette Darrell  
Jack Davies and Kay Kendall  
Mary Lou and Jeff DeLong  
Bob Drogin and Frankie Joaquin

Paul and Karen DiMaura  
William and Prudence Finn  
Lisa and Gary Foster  
Woody and Dede Frank  
April and Hap Hamel  
Ben Heineman and Cristine Russell  
Jeremy Henderson and Catherine Samuels  
Louis and Virginia Hoynes  
Stuart Katz and Jane Martin  
John Kennedy and Jane Seagrave  
Mark and Ann Kington  
Michael and Andre Koester  
Douglas Liebhafsky and Wendy Gimbel  
The Liman Foundation  
Lisa and Mike MacKenty  
Drew and Catherine Marcus  
Martha's Vineyard Bank  
James and Mary-Kate McKenna  
Lloyd and Susan Miller  
Lee and Julie Moncton  
Angela Hart Morris  
Hillary Noyes-Keene and John Keene  
Paul Osterman and Susan Eckstein  
Gregory Palermo  
Pieter Pil and Karen Casper  
Thomas Rapone and Molly Valle  
Phil and Deb Regan  
Sir Paul and Lady Jill Ruddock  
Richard and Bette Saltzman  
Sandpiper Rentals, Inc.  
Linda Schapiro  
George and Isabel Shattuck  
The Procter Smith Family  
Woollcott and Leah Smith  
Walter Teller and Claudia Weill  
D. Warren and Anne Vose  
Doug West and Irene Ziebarth  
Randy and Nancy Williams

## **Summer Benefit Committee**

Ellen Harley, Chair  
Susannah Bristol  
Nevenka K. Daniels  
Angela Egerton  
Audrey Egger

Allyson Getsinger  
Terry Guylay  
Carol Hillenbrand  
Sevda Kleinman

Lil Province  
Nancy Randall  
Sara Tucker  
Anne Vose

All of us at SMF were saddened to hear of the recent passing of Allyson Getsinger. Allyson was a dedicated member of our summer benefit committee and was always kind, warm, and welcoming. Our thoughts and condolences go out to Peter Getsinger and his entire family.





A MARTHA'S VINEYARD LAND TRUST

PO Box 1088  
Vineyard Haven, MA 02568  
[www.sheriffsmeadow.org](http://www.sheriffsmeadow.org)

ADDRESS SERVICE REQUESTED

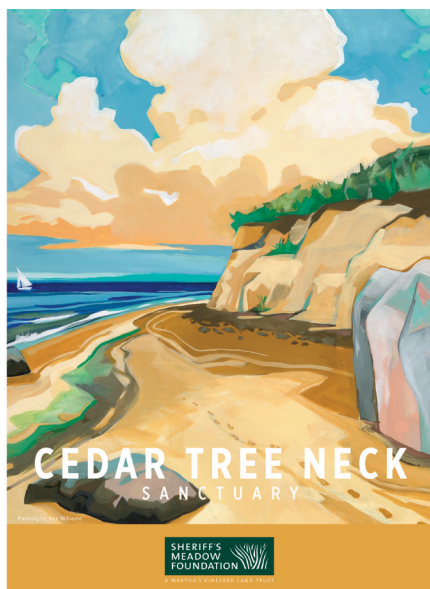
Printed locally on recycled paper  
using 100% vegetable-based inks

Non-Profit Org.  
U.S. Postage  
PAID  
Permit No. 601  
Brockton, MA

#### ANNUAL GIVING - CARES Act Deduction

CARES Act Allows for New Charitable Giving Benefits

This new benefit, also referred to as a universal deduction, allows for a charitable deduction of up to \$300 per individual for individuals who do not itemize their deductions.



#### SMF Hats

Looking for some fall headgear? SMF has available Imperial baseball cap embroidered with Sheriff's Meadow Foundation's logo! These handsome baseball caps help promote the work SMF does. During hunting season we recommend our blaze orange cap for high visibility. Other colors available are breaker blue, charcoal, and khaki. The price is \$20. To order a baseball cap visit [www.sheriffsmeadow.org](http://www.sheriffsmeadow.org). or call 508-693-5207.

Blaze orange

Khaki



Charcoal

Breaker blue

The Rez Williams Cedar Tree Neck 14" x 19" poster is still available. To obtain one, please make a donation to Sheriff's Meadow Foundation at <https://sheriffsmeadow.org/support-us/donate-online/> or send a check made out to Sheriff's Meadow Foundation, PO Box 1088, Vineyard Haven, MA 02568.