



The Conservation of Pimpneymouse Farm

Sheriff's Meadow Foundation, in partnership with the Martha's Vineyard Land Bank Commission, aims to conserve 167 acres of Pimpneymouse Farm on Chappaquiddick. The salt marshes, pine and oak forests, and pastoral fields of this property epitomize the natural, beautiful, rural landscape and character of Martha's Vineyard.



A MARTHA'S VINEYARD LAND TRUST

The Conservation of Pimpneymouse Farm

The conservation of Pimpneymouse Farm will:

- **Conserve** 167 acres of beautiful land on Chappaquiddick Island in Edgartown.
- **Conserve** a significant stretch of the shoreline of Poucha Pond.
- **Conserve** working forestland.
- **Protect** fertile farmland and open meadows.
- **Preserve** habitat for rare plants and animals.
- **Offer** miles of scenic trails and opportunities to enjoy and appreciate nature.
- **Protect** the watersheds of Poucha Pond and Cape Poge Bay.
- **Create** connections to abutting and nearby lands of Sheriff's Meadow Foundation, the Land Bank, and The Trustees of Reservations, allowing hikers to walk from Mytoi all the way to Wasque Reservation.

This conservation effort will protect sensitive habitat, conserve working forestland, and provide access to one of the island's most beautiful properties for generations.

Pimpneymouse Farm was established by Charles Welch, who purchased this land in 1928 and started the farm in 1932. For years, the land was home to Charles and Ruth Welch and their three daughters: Ruth Welch, Edo Potter, and Hope Slater. Edo Potter describes Pimpneymouse Farm and its history in her book, *The Last Farm on Chappaquiddick*. Conserving this land offers an opportunity to honor Edo Potter, who was a founder of the Chappy Open Space Committee and served for decades on the boards of Sheriff's Meadow Foundation, the Martha's Vineyard Land Bank, the Edgartown Conservation Commission, and the Trustees of Reservations and was a champion of conservation on Martha's Vineyard.



The Conservation of Pimpneymouse Farm



This partnership land acquisition effort will conserve much of the land now known as Pimpneymouse Farm.

- The total purchase price for these 168 acres of land is \$13.78 million.
- Of this, Sheriff's Meadow Foundation will contribute \$5.78 million and the Land Bank will contribute \$8 million. The Land Bank is purchasing a greater amount of valuable upland relative to wetland, hence the price differential.
- Each organization will acquire distinct parcels that each will own outright, as depicted on the attached map.
- These abutting parcels will be connected with a public trail system, and a new trailhead will be created on the Dike Road.
- A purchase and sale agreement is expected to be signed in 2023, with a closing to occur later.

Stewardship highlights include:

- Public access, free of charge, to a loop trail system, with connections to abutting conservation lands and nearby trails facilitated.
- The continued agricultural use of the farmland.
- Protection for rare plants and wildlife and their habitat.
- Preservation of scenic views along the Chappaquiddick Road and along Poucha Pond.
- Continued forest management under a forest management plan.



The Conservation of Pimpneymouse Farm

Sheriff's Meadow Foundation can only conserve Pimpneymouse Farm with your support. Sheriff's Meadow Foundation is responsible for \$5.78 million of the purchase price, and also needs to create a stewardship endowment for the land. Our total fundraising goal, therefore, is \$7 million.

Total Goal: \$7 million.

Raised to Date: We are very pleased to report that, through grants and generous donors, we have already raised \$4.8 million.

Unmet Need: \$1 million towards the purchase price; \$2.2 million towards purchase price and an endowment.

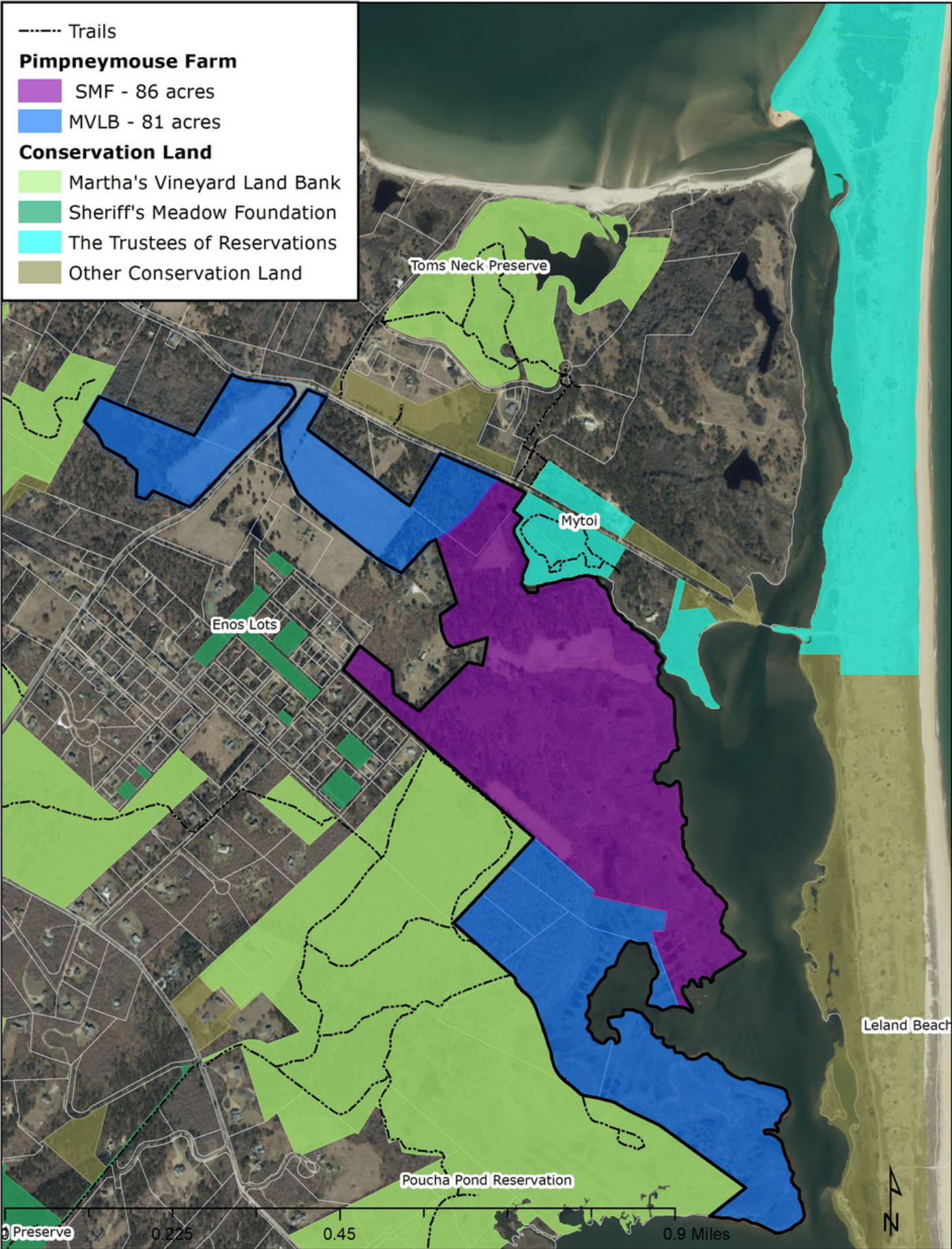
Special Opportunities: There are special opportunities to honor Edo Potter with a contribution, as well as other naming opportunity possibilities. We will be working with the family on appropriate naming opportunities for the land and trails.

We need your support. Please help us conserve Pimpneymouse Farm.

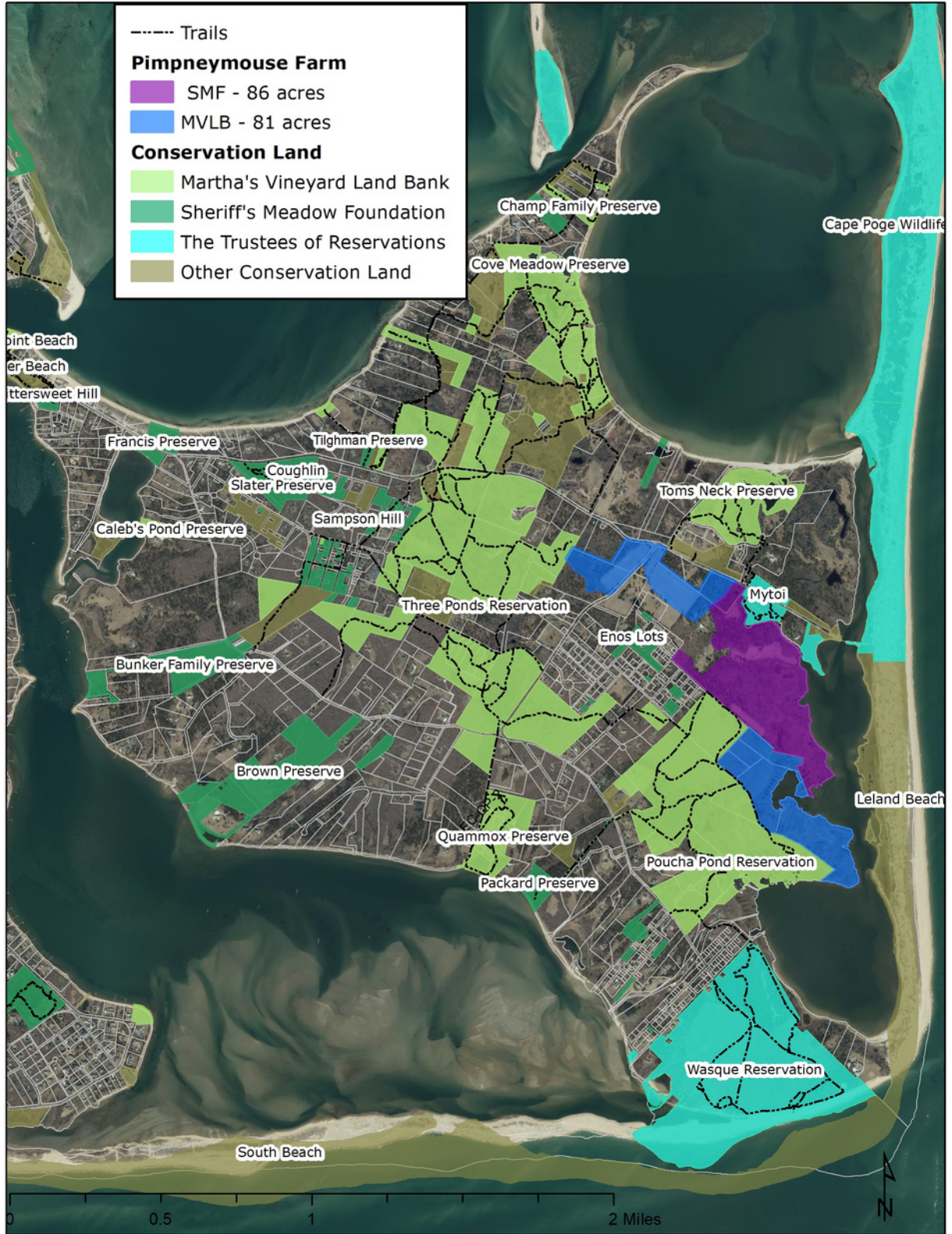
If you wish to make a gift, pledge, or ask questions, please contact Sheriff's Meadow Foundation President Adam Moore at moore@sheriffsmeadow.org or at (508) 280-7883. Thank you.



The Conservation of Pimpneymouse Farm



The Conservation of Pimpneymouse Farm



Adam R. Moore
President

moore@sheriffsmeadow.org
508.693.5207 office
508.280.7883 cell



A MARTHA'S VINEYARD LAND TRUST

Sheriff's Meadow Foundation
PO Box 1088
Vineyard Haven, MA 02568

Photographs by Kristen Geagan
and Adam Moore